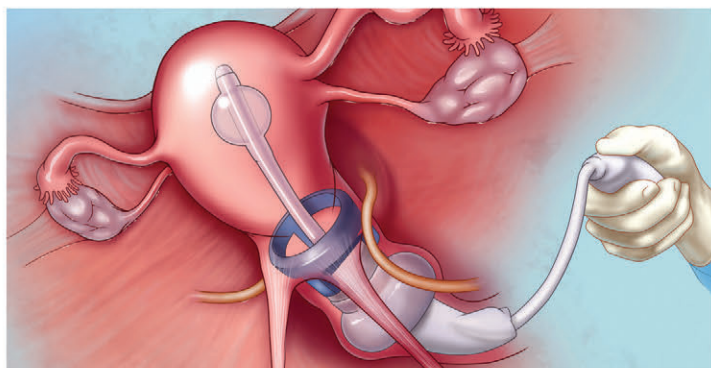


Advincula
DELINEATOR™
with Koh-Efficient® Technology

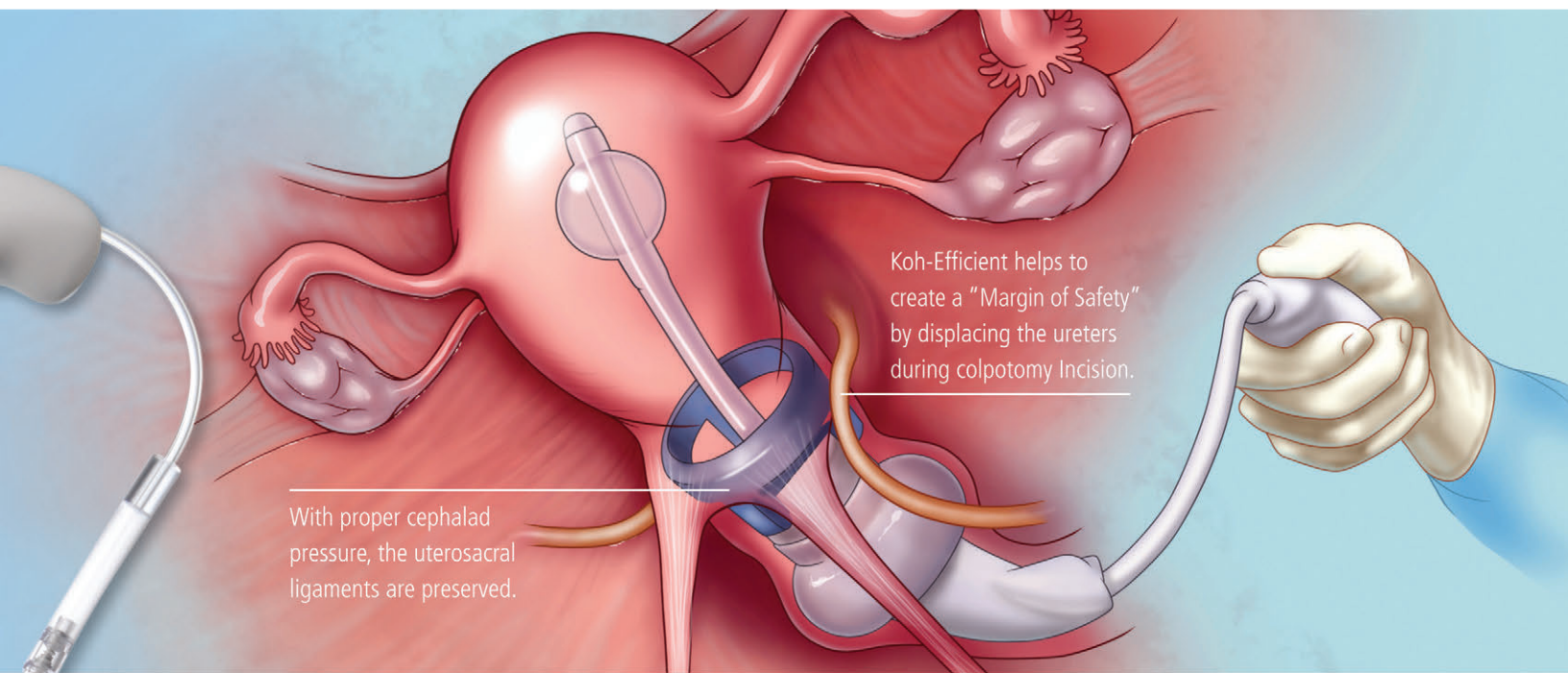
Advanced Uterine Manipulator
Exceptional Strength and Performance
In an Easy-to-Use Disposable



CooperSurgical

Unprecedented Ease of Use, Safety And Strength for TLH, LSH and LAVH – In an Efficient Disposable Design

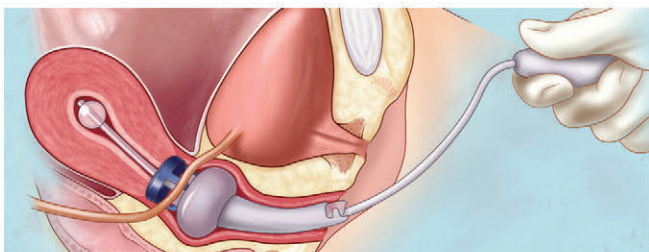




Superior Design Simplifies Prep and Speed of Insertion

The Advincula Delineator™ is designed for ease of use, safety and maximum efficiency.

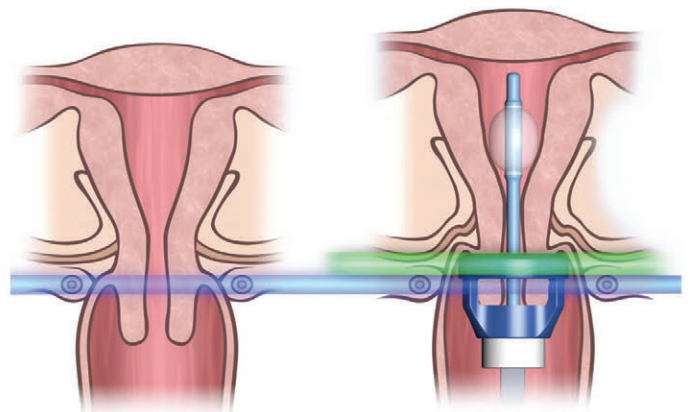
- Sound the uterus and use the Cervical Sizer to determine the appropriate Koh Cup size.
- Remove the fully-assembled device from the sterile packaging.
- Place manipulator through cervix and inflate uterine balloon.
- Slide the Koh-Efficient® to the sounded number marked on the handle.
- Press the position lock to secure the cup, and begin the procedure.



Integrated, unified design, simplifies setup and insertion.

Koh-Efficient Helps Distance Critical Anatomy to Create a "Margin of Safety"

With the application of proper cephalad pressure, the Koh-Efficient helps to create a "Margin of Safety" by preserving the uterosacral ligaments and displacing the ureters during colpotomy incision.



Available in Three Cup Sizes



The Advincula Delineator is available in three cup sizes to accommodate varied anatomy, and is constructed with Ultem™ resin or stainless steel cups for electrocautery, harmonic scalpel and laser procedures.

Advincula **DELINEATOR™**

with Koh-Efficient® Technology

Ordering Information

Advincula Delineator™ with Ultem Koh Efficient®

AD750-KE30	Advincula Delineator 3.0CM Ultem Plastic cup (3 per box)
AD750-KE35	Advincula Delineator 3.5CM Ultem Plastic cup (3 per box)
AD750-KE40	Advincula Delineator 4.0CM Ultem Plastic cup (3 per box)

Advincula Delineator™ with Stainless Steel Koh Efficient®

AD750-KES30	Advincula Delineator 3.0CM Stainless Steel cup (3 per box)
AD750-KES35	Advincula Delineator 3.5CM Stainless Steel cup (3 per box)
AD750-KES40	Advincula Delineator 4.0CM Stainless Steel cup (3 per box)



Endotherapeutics

Distributed by

Endotherapeutics

ABN 89 088 045 103

Level 1, 51 Rawson St, Epping NSW 2121 Australia

T: +61 (2) 9869 2868 **F:** +61 (2) 9869 7723

E: info@endotherapeutics.com.au

www.endotherapeutics.com.au

CooperSurgical

CooperSurgical is a leading manufacturer of innovative medical devices and procedure oriented solutions that advance the standard of care. Our highly reliable and clinically relevant products, as well as nearly 150 clinically trained utilization sales specialists facilitate the delivery of enhanced outcomes for your patients, regardless of the clinical setting.

For more information, call 800.243.2974 or 203.601.5200 or visit www.coopersurgical.com. Also, see us on YouTube at www.YouTube.com/CooperSurgical.

800.243.2974 | 203.601.5200 | www.coopersurgical.com | 95 Corporate Drive, Trumbull, CT 06611