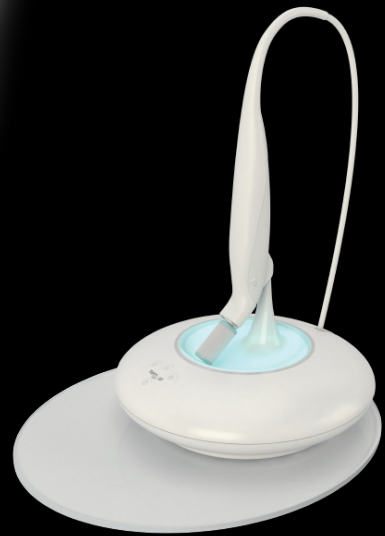


bloomea[®]
PARIS

ANTI-AGING - STRETCHMARKS - SCARS - PREGNANCY MASKS

LA FONTAINE



COMPACT AND LIGHT



Created by French plastic surgeons

BLOOMEA® INVENTS « LE MODELING »

3 Technologies, 1 Device !

1. MACRO-EXFOLIATION



At the beginning of the skin care, a tip is opened in front of the customer and fixed on the hand-piece: single-use tips avoid any kind of maintenance and ensure the necessary hygiene to this care.

Once the handpiece switched on, the tip goes into high frequency oscillations and its grainy exfoliating surface in contact with the skin erases imperfections layers by layers to smooth and unify the complexion: this is Macro-exfoliation.

The person feels completely painless friction and vibration.

2. MICROVIBRATIONS



After this first step, the exfoliating surface is taken off the tip to leave the underlying silicone. A few drops of the Bloomea® cream rich in elastin, collagen and hyaluronic acid are applied to the skin.

Then begins a pleasant massage by high frequency Microvibrations that stimulates the skin in depths, and increases the production of elastin and collagen to tighten and re-tone the skin.

3. LIGHT THERAPY



Light therapy is emitted from the handpiece during the whole treatment. The active wavelengths on the skin is close to red (633 nm) and it reinforces the regenerative effect of Macro-exfoliation and Microvibrations massage.

Le Modeling Bloomea® session takes about 30 minutes.

10 YEARS

OF USE AND OPTIMIZATION

94 %

SATISFACTION*

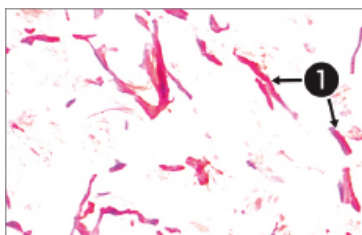
20 %

ELASTIN INCREASE

* Clinical test carried out on 173 persons who have benefitted from Le Modeling Bloomea® between February 2012 and June 2014: 163 persons were totally pleased with the results, which represents a 94% rate.

PROVEN EFFICIENCY

USED FOR MORE THAN 10 YEARS BY ESTHETIC SURGEONS



Histological section of skin**.

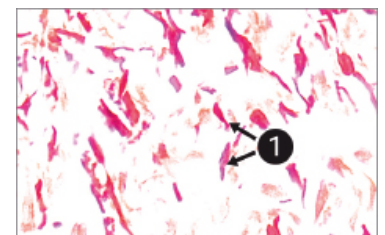
Before any session

1. Elastin

Contrary to popular belief, it is elastin, much more than collagen, which provides the skin with its essential qualities of plasticity and elasticity.

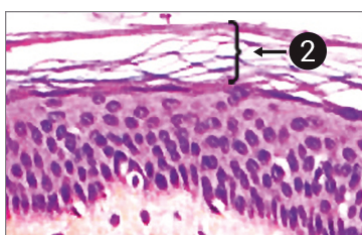
Studies show a **20% increase in elastin**. This explains the tone benefit and re-toning effect of the skin.

- légend 1 -



Histological section of skin**.

After 4 sessions



Histological section.

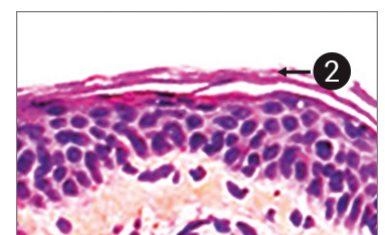
Before any session

2. Stratum corneum

Studies show a **smoothing of the skin surface**.

It explains why the skin gets softer to the touch and more radiant and brighter to the eye. The complexion is unified.

- légend 2 -



Histological section.

After 4 sessions

** For a general understanding elastin is highlighted in dark red on the histological section of skin

BODY AREAS TO BE TREATED

ANTI-AGING		SOCIAL AREAS	
STRETCHMARKS	FACE	HANDS	NECK & NECKLINE
			
BUTTOCK STRETCH MARKS	ACNE SCARS AND OTHER SCARS	TIGHTENS PORES	REDUCES NECKLINE FURROWS
BREASTS STRETCH MARKS	ACNE SCARS AND OTHER SCARS	FADES FURROWS AND SCARS	SMOOTHES NECK SKIN
BELLY STRETCH MARKS	TIGHTENS AND TONES UP THE SKIN	TIGHTENS AND TONES UP THE SKIN	TIGHTENS AND TONES UP THE SKIN
BELLY STRETCH MARKS	SMOOTHES THE SKIN GRAIN	TONES OWN AGE SPOTS	TIGHTENS AND TONES UP THE SKIN
THIGHS STRETCH MARKS	TIGHTENS PORES	SMOOTHES AND SOFTENS THE SKIN	TONES DOWN SCARS

LE MODELING BLOOMEA® IN PICTURES

∞ LASTING EFFECT ∞

WRINKLES

Before any session



After 10 sessions Bloomea®

STRETCHMARKS

Before any session



After 10 sessions Bloomea®

ACNE SCARS

Before any session



After 10 sessions Bloomea®

All pictures are taken by our beautician clients

WHY HAVE WE SUCCEEDED WHERE OTHERS HAVE FAILED?

Because our technique is based on **10 years of use and improvement by cosmetic surgeons**, skin specialists par excellence. Because these ten years have made it possible to create a protocol with exponential results thanks to advanced scientific studies, clinically proven. Because our tips are the fruit of many researches to **combine efficiency, hygiene and ease of use**.



PROTOCOLS

Clear and simple rules to quickly familiarize yourself with the unit and achieve optimal efficiency



ERGONOMICS

Easy to transport. A light and highly flexible hand piece for an easy and comfortable everyday use



HYGIENE

Single-use tips for rigorous hygiene and easy use



DESIGN

La Fontaine Bloomea®, a symbol of purity and harmony, which combines esthetics with effective performance



BLOOMEA® TREATMENTS

THE STRETCHMARKS treatments



Goal:

To progressively fade stretch marks

Areas:

Buttocks, breasts, stomach, hips, thighs

Treatment:

On average, 10 sessions at one even two week interval

8 to 12 sessions depending on the stretch mark type and skin quality

Maintenance:

1 session every 4 to 8 months depending on skin type

THE PERFECTOR treatments



Goal:

To smooth, firm and tone the skin

Areas:

Face, hands, neck, neckline and scars

Treatment:

On average, 8 sessions at one to two week intervals 6 to 10 sessions depending on the type of problem and skin quality

Maintenance:

1 session every 2 to 3 months depending on skin type

THE BLOOMEA COUP D'ECLAT



Goal:

Clearer, brighter, smoother skin

Areas:

Face

Treatment:

One session every month or two to regularly regenerate the skin, or whenever needed for special occasions: The Blooméa® coup d'éclat radiance treatment is a much more effective facial than conventional beauty center procedures in maintaining a clearer, smoother and more even skin tone. This treatment ensures optimal cream absorption as well as a longer lasting makeup.

THE OPTIMAL SCRUB BY BLOOMEA®

This is done at the beginning of the other facial treatments in the beauty center, replacing a conventional manual scrub. An application of Bloomea® Macro-exfoliation makes for a perfect scrub that is even on the surface as well as fully penetrative far better than an incomplete conventional manual scrub. An optimal preparation of the skin for a better penetration of the active principles specific to each care.



TURBOBUSINESS
DÉCROCHER LA LUNE

Email : contact@b2b2cpro.ca - P: 1 (877) 210-2042 - www.b2b2cpro.ca