

SIMPLY CLEVER SINGLE HAND USE

Cathejell

Sterile & Clear Lubricant Gel
Lignocaine 2%



DESIGNED BY UROLOGISTS



● **Break off tip**
For easy single hand opening

● **Countersunk break off point**
For smooth insertion



● **Accordion syringe**
Optimises sterile technique

No confusion with injection syringe

Preservative free

Easy administration with one hand

Dosing with low initial pressure for controlled, smooth and gentle instillation

Enables aspiration of gel and urine



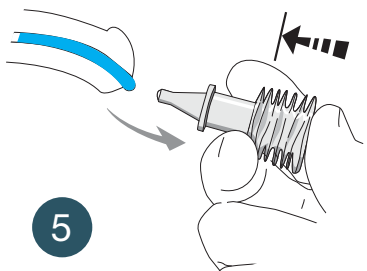
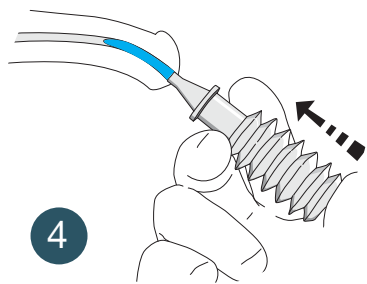
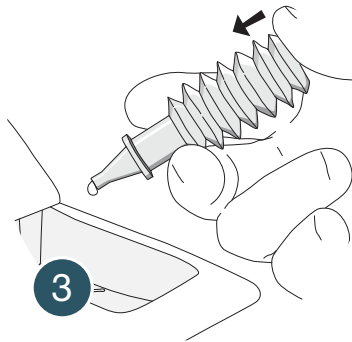
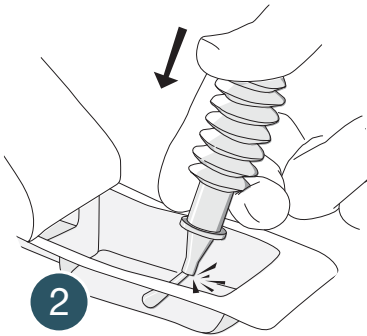
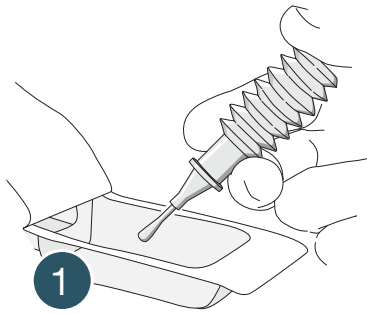
INSTRUCTIONS FOR USE



SIMPLY CLEVER SINGLE HAND USE

Cathejell

Sterile & Clear Lubricant Gel
Lignocaine 2%



Accordion syringe

The special design of the accordion syringe permits single hand opening and gentle instillation.

- 1 Open blister pack by peeling back the paper
- 2 Remove the tip by a short sharp "tap" downwards onto sterile field
- 3 Squeeze out one drop of gel with gentle pressure
- 4 Insert the applicator nozzle into the meatus and instill slowly
- 5 Empty the accordion syringe completely and maintain pressure until after removal



Endotherapeutics

Distributed by Endotherapeutics

Suite 1, Level 1, 51 Rawson Street, Epping NSW 2121, Australia

T: 1300 00 ENDO F: + 61 2 9869 7723

E: info@endotherapeutics.com.au www.endotherapeutics.com.au