

# SYSTEMIC STOMAL ASSESSMENT TOOL

Clinician: \_\_\_\_\_ Patient: \_\_\_\_\_ Date: \_\_\_\_\_

## PATIENT NEEDS

Communication Preference: \_\_\_\_\_ Consistent needs: \_\_\_\_\_

Voice Effort: \_\_\_\_\_ Voice Quality: \_\_\_\_\_

Aims: e.g. length of wear vs ease of wear

## STOMA

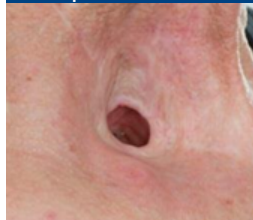
Diameter by point measurements: 9-3 o'clock \_\_\_\_\_ mm & 12-6 o'clock \_\_\_\_\_ mm

Diameter by size: 8 9 10 12

Shape: Irregular



Shape: Round



Shape: Oval



Comments

e.g. Presence and description of stomal lip? VP position?

## PERISTOMAL LANDSCAPE

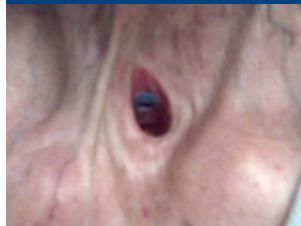
Notable prominences:

Sternocleidomastoid



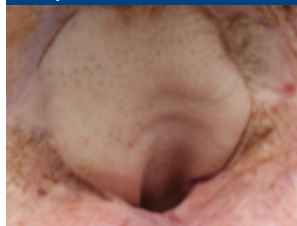
L R Bilateral  
\_\_\_\_ mm bw

Sternal Notch



L R Bilateral  
\_\_\_\_ mm bw

Flap



Details

Lymphoedema



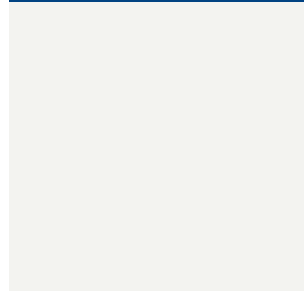
Details

Suture Lines:

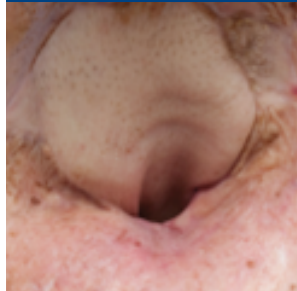
Lower Neck Apron



Mid Neck Apron



Other


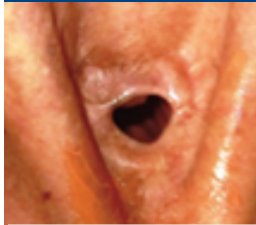



Comments



# SYSTEMIC STOMAL ASSESSMENT TOOL

## SKIN

Texture	Condition	Active Process	Comments
			<i>Consider perspiration, irritation, erythema, ulceration, infection</i>
Supple Taught Lax	Normal Oily Dry		

## SECRECTIONS

Type	Amount	Clearance	Comments
Thin Thick Crusted/Dried Purulent	Scant Small Moderate Large/Copious	Effective Ineffective	

## NOTES