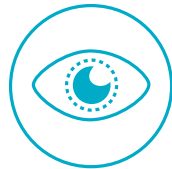
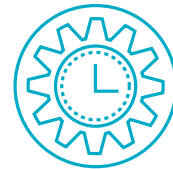


Advance patient care and your practice



Instant endometrial imaging
guided by
direct visualisation¹



Efficient workflow with
in-office exams that better
prepare for and reduce OR visits^{2,3}



endosee[®]ADVANCE

See now. Know now.[™]



Endotherapeutics
IMPROVING HEALTHCARE

See and know instantly with Endosee® Advance

Discover all the ways this direct visualisation system can elevate your practice²⁻⁶



Evaluate

- Abnormal uterine bleeding (AUB), premenopausal and postmenopausal⁴
- Menstrual disorders: amenorrhea, intermenstrual bleeding, and menorrhagia⁴
- Infertility^{4,5}
- Recurrent miscarriage²



Identify

- Polyps^{4,5}
- Fibroids^{4,5}
- Retained products of conception⁴
- Tissue in need of biopsy for histologic evaluation⁴
- Focal lesions missed with endometrial biopsy (EMB) (when EMB is incomplete and not diagnostic)⁴
- Endometrial atrophy⁴



Perform

- Transection of intrauterine adhesions and septa⁶
- Directed endometrial biopsies⁵
- Polypectomy (pedunculated, <2 cm)⁵
- Localisation and retrieval of IUD⁵
- Presurgical planning for removal of submucosal fibroids and large polyps or uterine septum repair^{2,4}

Helps you and your patients avoid the hassles and worry of delayed diagnosis^{2,3}

Endosee Advance helps reduce:



Extra appointments



OR costs



Wait times



Staffing allocation and training



Schedule conflicts



Sterilization costs

**Immediate diagnostic information at the time of visit
reduces your patients' worry and stress of waiting⁹**

Endosee[®] Advance

The all-in-one, direct visualisation system for diagnostic and therapeutic procedures

Features to help elevate your in-office procedures

- ✓ Your exam is guided by clear color visualisation
- ✓ Reusable display module
- ✓ Sterile, single-use cannula designed for ease of insertion
- ✓ Channel for fluid infusion
- ✓ 5 french (1.6mm) working channel
- ✓ Still image or video capture of every exam
- ✓ See the picture you just took
- ✓ Transfer exam data to your computer via USB cable

Reusable working channel instruments

Perform diagnostic and therapeutic procedures during in-office exams

Biopsy
forceps
ES-BPSY

Spoon forceps,
long serrated
ES-LNGR

Foreign body
grasper,
fenestrated
ES-FBGR

Ureter slitting
scissors,
single action
ES-SCIS

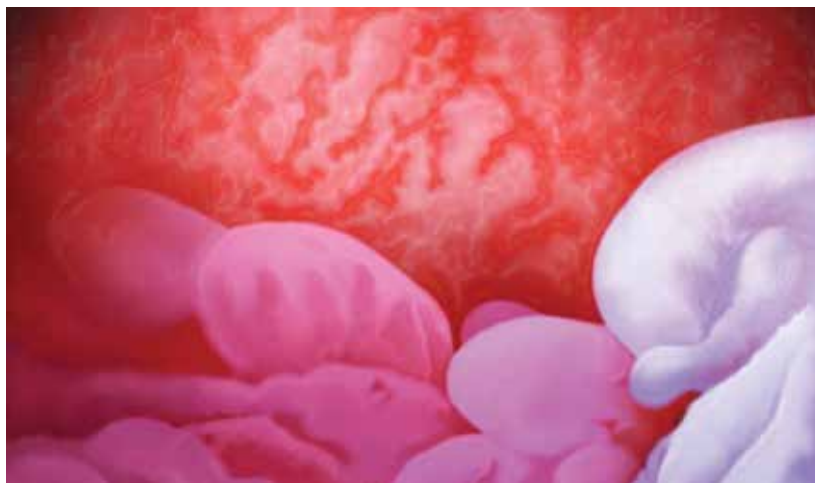


endosee[®]ADVANCE

See now. Know now.[™]

See the difference Endosee Advance can make

The clear color display delivers the most accurate visualisation



SIS



TVUS



endosee[®]ADVANCE

See now. Know now.[™]

Advance patient care and your practice

See now^{1,3,11}

SEE

the endometrial lining in an average of **<3 minutes**

Know now^{1,3,11}

KNOW

immediate information about **her abnormal bleeding**

SEE

the presence of **uterine pathology**

KNOW

if an **OR visit is warranted**

SEE

the **in-office** possibilities

KNOW

you are **advancing patient care** and **your practice**

Call 1300 00 ENDO (36 36)
info@endotherapeutics.com.au



Endotherapeutics
IMPROVING HEALTHCARE

CooperSurgical
Medical Devices

- Receive more information
- Place an order
- Request contact from an Endotherapeutics Product Specialist



endosee[®]ADVANCE

See now. Know now.[™]

References: 1. Goldstein SR, Anderson TL. Endometrial Evaluation: Are you still relying on a blind biopsy? *OBG Mgmt Supp.* 2017;10:S1-S4. 2. Isaacson K. Office Hysteroscopy: a valuable but under-utilized technique. *Curr Opin Obstet Gynecol.* 2002;14:381-385. 3. Moawad N, Santamaria E, Johnson M, Shuster J. Cost effectiveness of office hysteroscopy for abnormal bleeding. *JSLS.* 2014;18:1-5. 4. Bradley L. Indications and contraindications for office hysteroscopy. In: Bradley LD and Falcone T, eds. *Hysteroscopy: Office evaluation and management of the uterine cavity.* Philadelphia, PA: Mosby Elsevier; 2009:19-38. 5. Anderson TL. Hand-held digital hysteroscopy system a game-changer. *Contemp ObGyn.* <https://www.contemporaryobgyn.net/contemporary-obgyn/news/hand-held-digital-hysteroscopy-system-game-changer?page=0,3&trendmd-shared=1>. Updated September 13, 2016. Accessed May 8, 2019. 6. 510(k) SUMMARY K190639 May 13, 2019. 7. Grimbizis GF, Tsolakidis D, Mikos T, et al. A prospective comparison of transvaginal ultrasound and saline infusion sonohysterography and diagnostic hysteroscopy in the evaluation of endometrial pathology. *Fertil Steril.* 2016;94(7):2720-2725. 8. Guido RS, Kanbour-Shakir A, Rulin MC, Christopherson WA. Pipelle endometrial sampling. Sensitivity in the detection of endometrial cancer. *J Reprod Med.* 1995;40(8):553-555. 9. Goldstein SR & Lumsden MA. Abnormal uterine bleeding in perimenopause. *Climacteric.* 2017;20(5):414-420. 10. Data on file: Feedback from the first 106 Endosee procedures with 42 clinicians. 11. Goldstein E. Best practices: advantages of in-office hysteroscopy in the diagnosis of abnormal uterine bleeding with Endosee. *Ob Gyn News. Supplement.* <https://www.mdedge.com/obgyn/best-practices>. Updated September 26, 2017. Accessed May 8, 2019. 12. Data on file: Feedback from experienced Endosee users on the first 50 Endosee Advance procedures.