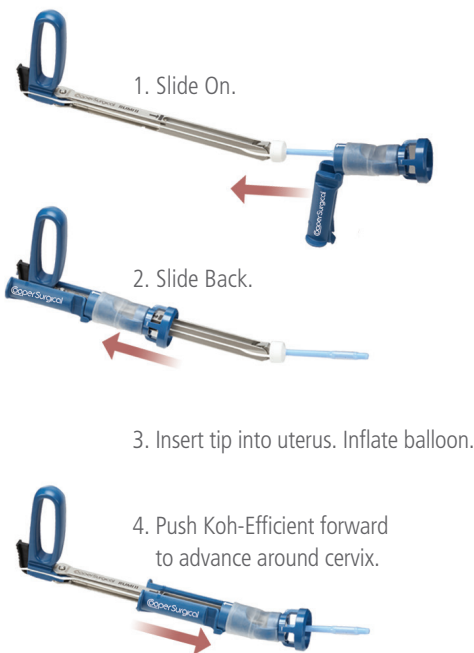


The Best Is Now The Easiest



RUMI II is engineered with our easy load system making it simple and easy to insert. Scan. Watch. Learn. or go to coopersurgical.com/RUMI

RUMI® II SYSTEM

Engineered With Our New Easy Load Design

Always the Best:

- Superior strength – Metal construction ensures better durability and tactile feedback
- Precise control – 140° of articulation at the cervix, with locking handle
- Safer surgery – Multiple tip and KOH Cup™ sizes provide unparalleled delineation of the fornix

Now the Easiest:

- Faster set up – Integrated KOH Cup and pre-attached occluder balloon facilitates assembly
- Easier insertion – Easy load design permits insertion under direct visualization
- Better visibility – Koh-Efficient™ slides forward to securely lock cup in place around the cervix
- Longer length – Accommodates larger patients
- Single-use cup – Sterile, accurate and stable cutting surface for each surgery

During TLH procedures, the Koh-Efficient creates a 'margin of safety' by providing a visual landmark and backstop for full circumferential colpotomy, as well as distancing the ureters during the incision. Vaginal length is maximized and pneumoperitoneum is maintained.

CooperSurgical

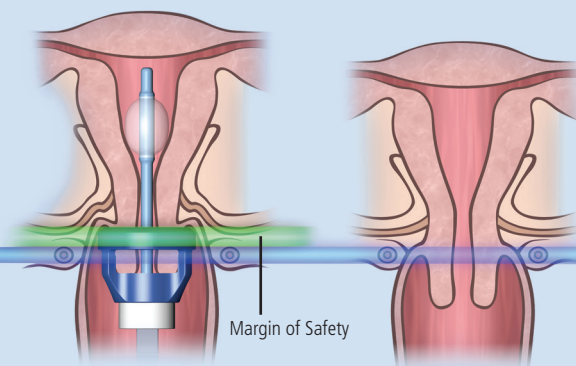
Achieve Superior Control and Ideal Visualization with the Redesigned RUMI® II System

- 2 inch longer shaft for better access
- New tips to accommodate varying patient anatomy
- Sacrocolpopexy and Sacrocervicopexy tips
- New Koh-Efficient™ for easier, faster, safer TLHs
- Improved placement of KOH Cup™ around cervix
- Cervical Sizer to ensure the right Koh-Efficient fit
- Catheter management system

RUMI and RUMI II System Compatibility

- RUMI tips are compatible with all RUMI handles including RUMI, RUMI II, RUMI Arch®
- The RUMI II Koh-Efficient systems are unique to the RUMI II Uterine Manipulator
- The UPS has three reusable adaptors – one each that is specific to the RUMI, RUMI II, RUMI Arch
- The original KOH Cup and Colpo-Pneumo Occluder™ system can be used with the RUMI II

The Koh Efficient™ Creates a Margin of Safety by Providing a Visual Land Mark and Back Stop for Full Circumferential Colpotomy



Ordering Information

Code	Product	Description
Uterine Manipulator		
UMH650	RUMI II Handle	(1 each)
RUMI Tips		
UMY514	RUMI Tip Yellow	5.1 mm x 3.75 cm (5 per box)
UML516	RUMI Tip Lavender	5.1 mm x 6 cm (5 per box)
UMW676	RUMI Tip White	6.7 mm x 6 cm (5 per box)
UMB678	RUMI Tip Blue	6.7 mm x 8 cm (5 per box)
UMG670	RUMI Tip Green	6.7 mm x 10 cm (5 per box)
UMO672	RUMI Tip Orange	6.7 mm x 12 cm (5 per box)
SACRO-1	Sacrocolpopexy Tip - Large	(3 per box)
SACRO-1S	Sacrocolpopexy Tip - Small	(3 per box)
SACRO-1C	Sacrocervicopexy Tip - Concave Distal End	(3 per box)
Cervical Sizer		
KC-SIZER	Cervical Sizer	(1 each)
RUMI II Koh-Efficient System		
KC-RUMI-25	RUMI II / Koh-Efficient	2.5 cm (5 per box)
KC-RUMI-30	RUMI II / Koh-Efficient	3.0 cm (5 per box)
KC-RUMI-35	RUMI II / Koh-Efficient	3.5 cm (5 per box)
KC-RUMI-40	RUMI II / Koh-Efficient	4.0 cm (5 per box)
Uterine Positioning System™		
371550-03	Uterine Positioning System	
53468	Adapter, RUMI II, UPS	
400245-01	Drape, UPS, 20/Case	
371560-01	Uterine Positioning System - Cart	

All RUMI Products are Latex Free

CooperSurgical

**Manufactured by
Cooper Surgical**



Endotherapeutics

**Distributed by
Endotherapeutics**

ABN 89 088 045 103
Level 1, 51 Rawson St, Epping NSW 2121 Australia
T: +61 (2) 9869 2868 **F:** +61 (2) 9869 7723
E: info@endotherapeutics.com.au
www.endotherapeutics.com.au