



OTSC® Proctology.....



OTSC® is now also available for proctology. OTSC® clip application is an established procedure for treating fistulas and anastomotic leaks in the digestive tract.

- Rapid, minimally invasive, surgical procedure
- Easy transanal clip application by ergonomic one-hand operated instrument
- Closure of anorectal fistulas and anastomotic leaks
- No delayed relaxation or rupture of sutures

..... OTSC®

Over-The-Scope-Clipping system for proctology

OTSC® Proctology is an innovative clipping system to be applied in proctology procedures. OTSC® Proctology is used for wall closure in the anorectum (e.g. fistulas) and offers the proctologist three unique advantages:

- Large volume of tissue secured
- High stability at the lesion site
- Minimal strain on surrounding tissue.

The exceptional properties and therapeutic functions of the system are based on its special material and design: the superelastic Nitinol® is biocompatible and, if needed, even suited to be applied as a long-term implant.

The OTSC® Proctology system is intuitive and easy to use and similar to other devices based on the application cap principle.

..... Application

Anorectal fistulas



The designated application site for the clip is lined up with the application cap which is pressed on the target site. To facilitate this procedure two U-shaped sutures can be placed through the sphincter muscle centering the internal opening of the fistula in a cross-like fashion. The ends of the threads are pulled through the working channel of the instrument by means of the thread retriever.

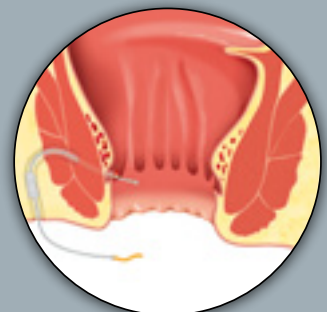
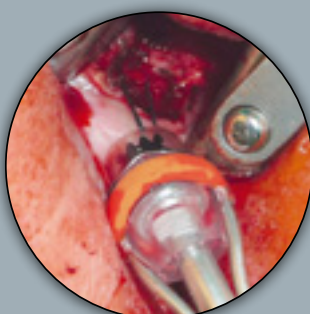
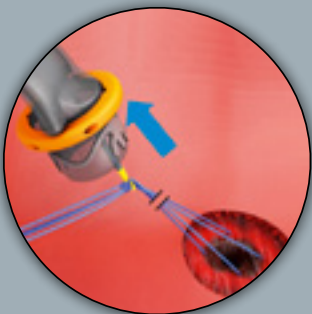


Except for the OTSC® Proctology Clip Cutter all OTSC® Proctology products are disposable and designed for single patient use.

To place the applicator cap precisely on the lesion, either absorbable U-shaped sutures or the OTSC® Proctology Anchor may be used through the working channel of the instrument.

Preparation of the fistula tract before clipping

The applied clip closes the internal opening of the fistula by digging its teeth into the sphincter muscle and compresses the proximal fistula tract.



The Fistula Brush can be used to clean and debride the tissue lining of the fistula.

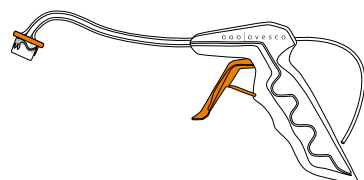
Additional indications

Hemostasis, closure of anastomotic leaks.



OTSC® Proctology

OTSC® Proctology consists of the applicator with a pre-mounted clip as well as a pre-set inserted thread retriever inside the working channel.

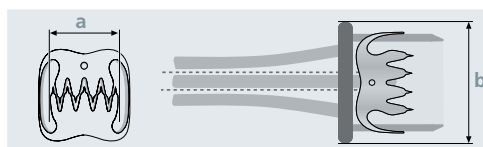


The applicator is inserted transanally under direct vision. By pulling the trigger, the clip is released and pushed into the tissue from the applicator cap.

To facilitate the application, usually U-shaped sutures are placed at the target site.

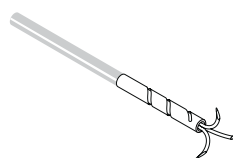
They can be pulled through the working channel by means of the pre-set thread retriever.

Alternatively the OTSC® Proctology Anchor can be used.

	a Width of compression area = clipping width 11 mm	b Maximum outer diameter of cap 23 mm
--	--	---

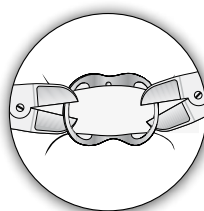
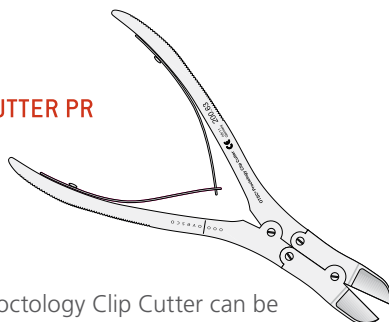
OTSC® Proctology application aids

Two instruments are available that facilitate the use of OTSC® Proctology



The OTSC® Proctology Anchor can be used for facilitating tissue approximation with the applicator cap in case stay sutures are difficult to apply.

The Fistula Brush can be used for preparation of the fistula tract, removal of tissue, debris and abrasion of the fistula tract.



The OTSC® Proctology Clip Cutter can be used to cut through a clip and remove it, if appropriate.

Proudly distributed by

Endotherapeutics
IMPROVING HEALTHCARE

1300 00 ENDO
info@endotx.com.au
endotx.com.au